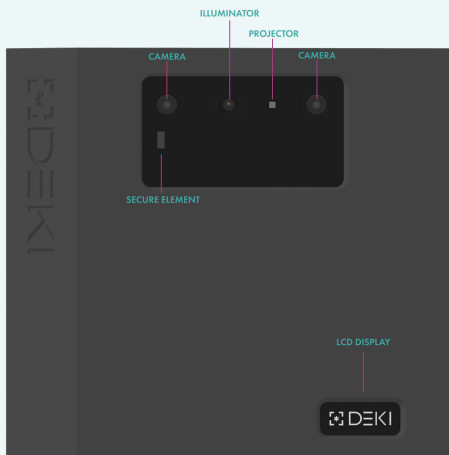




Access Control System



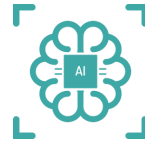
Key Features:

- Full HD 1080p Video
- Can store **up to 5.000 faces**
- Accuracy rate **over > 99%**
- Local computing (GDPR Compliant)
- 24/7 continuous face recognition through wired connection
- **Night Vision** support
- Web interface (mobile/desktop)
- Online and Offline functionality
- No installation - **Plug & Play**



Accurate

Our system has **over 99% accuracy** in lighting conditions from complete darkness to strong sunlight, plus it supports every skin tone and shade reliably.



Fast & Flexible

The specialized neural network allows **real-time face recognition under 1 second** and it supports adaptations over time - different facial hair, hairstyles and more.



Functional

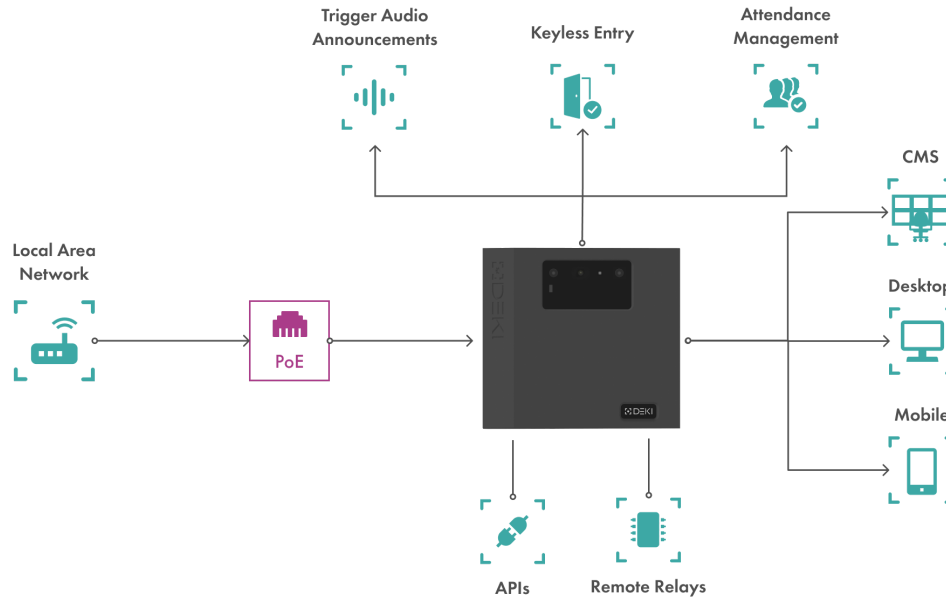
Manage attendance, trigger audio announcements and embrace keyless access. Our system can connect to **Smart Locks** via APIs and open **Electromechanical doors** and turnstiles remotely through Remote Relays.



Secure

Nothing beats local computing when it comes to security. All recognition happens locally and data can be stored on the premises (cloudless), making our system **secure and GDPR compliant**.

Connection Schema:



Technical Specifications:

Overview

Chipset	High-performance SOC chip
Camera	Full HD 1080p RGB dual camera
Storage	512mb of local storage
Ports	1x PoE 1Gbit/100Mbit
Audio Output	Built in Speaker

Face Recognition Module

True Acceptance Rate	Up to 99.76 %
False Acceptance Rate	1:1 Million
Face Database	Up to 5,000
Max Simultaneous Recognition	Supports up to 5 people in the Field of View
Verification Speed till action	< 1 second
Field of view (H x V)	56° x 78°
Recommended Distance	0.3 m to 1 m
Spoof Acceptance Rate	< 0.1%
Encryption Used	AES-256

General

Dimensions	140 mm x 70 mm x 100 mm (5,5" x 2,7" x 3,9")
Weight	0.294 kg / 294g
Working Humidity	Up to 95%
Working Temperature	0°C to 50°C
Power Input	PoE 12V 30w

